

State of Wyoming Corner Record

(In compliance with the CORNER PERPETUATION AND FILING ACT, Wyoming Statutes, 1997 Section 33-29-140 et. seq., and the Rules and Regulations of the Board of Professional Engineers and Professional Land Surveyors)

Reverse side of this form may be used if more space is needed.

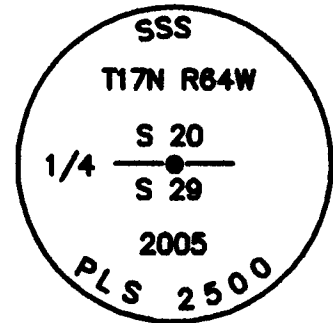
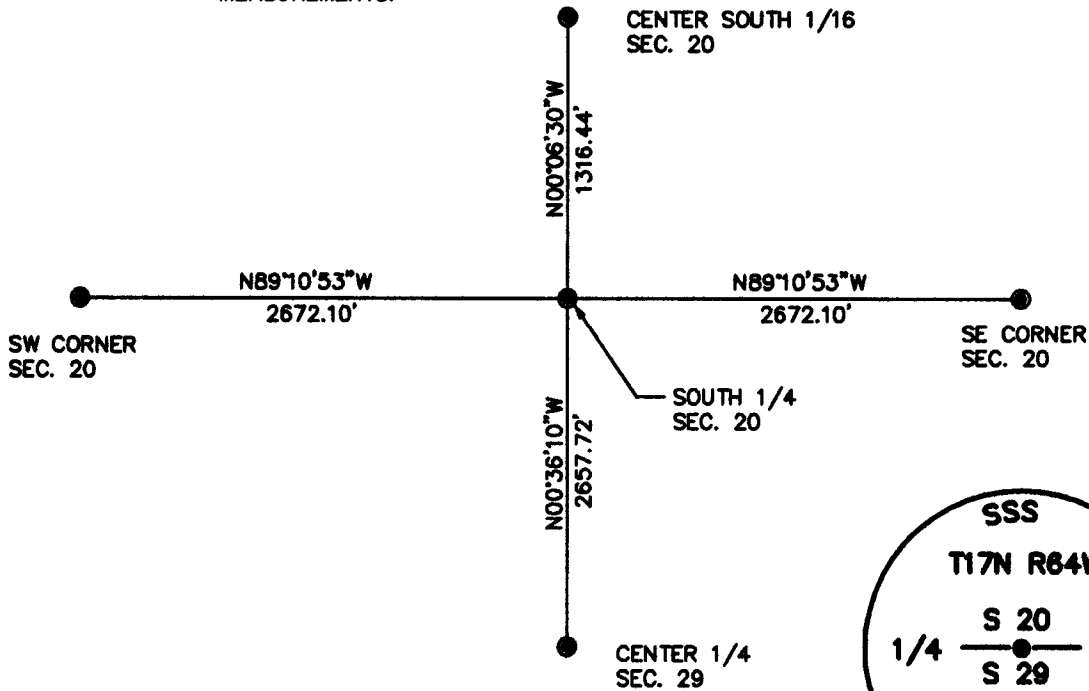
Record of original survey and citation of source of historical information (if corner is lost or obliterated). Description of corner monumentation evidence found and/or monument and accessories established to perpetuate the location of this corner. Sketch of relative location of monument, accessories, and reference points with course and distance to adjacent corner(s) (if determined in this survey). Method and rationale for reestablishment of lost or obliterated corner.

RECORD: LIMESTONE 16" X 12" X 3" SET 8" DEEP MARKED 1/4 ON NORTH SIDE FOR 1/4 SECTION CORNER.

MONUMENT FOUND: FOUND NOTHING.

MONUMENT SET: SET A 5/8" X 24" REBAR WITH A 2 1/2" ALUMINUM CAP SET FLUSH WITH THE GROUND SURFACE WITH THE CAP STAMPED AS SHOWN.

REFERENCES: MONUMNT LIES 10' NORTH OF A E-W BUFFALO FENCE AND IN THE SOUTH LANE A TWO TRACK TRAIL ROAD. MONUMENT WAS SET BY SINGLE PROPORTIONATE MEASUREMENTS.



RECORDED 10/05/2010 AT 1:50 PM REC# 554373 BK# 2186 PG# 454
 DEBRA K. LATHROP, CLERK OF LARAMIE COUNTY, WY PAGE 1 OF 1

Date of Field Work: 8/17/05

Office Reference: 06183

Monument Inscription

Cross Index Plat

1	2	3	4	5	6	7	8	9	10	11	12	13	14	15	16	17	18	19	20	21	22	23	24	25	
A	+	+	+	+	+	+	+	+	+	+	+	+	+	+	+	+	+	+	+	+	+	+	+	+	A
B	+	+	+	+	+	+	+	+	+	+	+	+	+	+	+	+	+	+	+	+	+	+	+	+	B
C	+	6	+	5	+	4	+	3	+	2	+	1	+	C											C
D	+	+	+	+	+	+	+	+	+	+	+	+	+	D											D
E	+	+	+	+	+	+	+	+	+	+	+	+	+	E											E
F	+	+	+	+	+	+	+	+	+	+	+	+	+	F											F
G	+	7	+	8	+	9	+	10	+	11	+	12	+	G											G
H	+	+	+	+	+	+	+	+	+	+	+	+	+	H											H
J	+	+	+	+	+	+	+	+	+	+	+	+	+	J											J
K	+	+	+	+	+	+	+	+	+	+	+	+	+	K											K
L	+	18	+	17	+	16	+	15	+	14	+	13	+	L											L
M	+	+	+	+	+	+	+	+	+	+	+	+	+	M											M
N	+	+	+	+	+	+	+	+	+	+	+	+	+	N											N
O	+	+	+	+	+	+	+	+	+	+	+	+	+	O											O
P	+	19	+	20	+	21	+	22	+	23	+	24	+	P											P
Q	+	+	+	+	+	+	+	+	+	+	+	+	+	Q											Q
R	+	+	+	+	+	+	+	+	+	+	+	+	+	R											R
S	+	+	+	+	+	+	+	+	+	+	+	+	+	S											S
T	+	30	+	29	+	28	+	27	+	26	+	25	+	T											T
U	+	+	+	+	+	+	+	+	+	+	+	+	+	U											U
V	+	+	+	+	+	+	+	+	+	+	+	+	+	V											V
W	+	+	+	+	+	+	+	+	+	+	+	+	+	W											W
X	+	31	+	32	+	33	+	34	+	35	+	36	+	X											X
Y	+	+	+	+	+	+	+	+	+	+	+	+	+	Y											Y
Z	1	2	3	4	5	6	7	8	9	10	11	12	13	14	15	16	17	18	19	20	21	22	23	24	25

Firm/Agency, Address

STEIL SURVEYING SERVICES LLC
 1102 WEST 18th STREET
 CHEYENNE WY 82001
 Telephone Number: (307) 634-7273

This corner record was prepared by me or under my direction and supervision.

SEAL & SIGNATURE



Corner Name SOUTH 1/4 Corner Section 20, T 17 N, R 64 W, 6th P.M. Cross-Index No.: R-7
 County: LARAMIE Wyoming
 SBRPEPLS/PLSW: March 1994; PLSW January 1998